

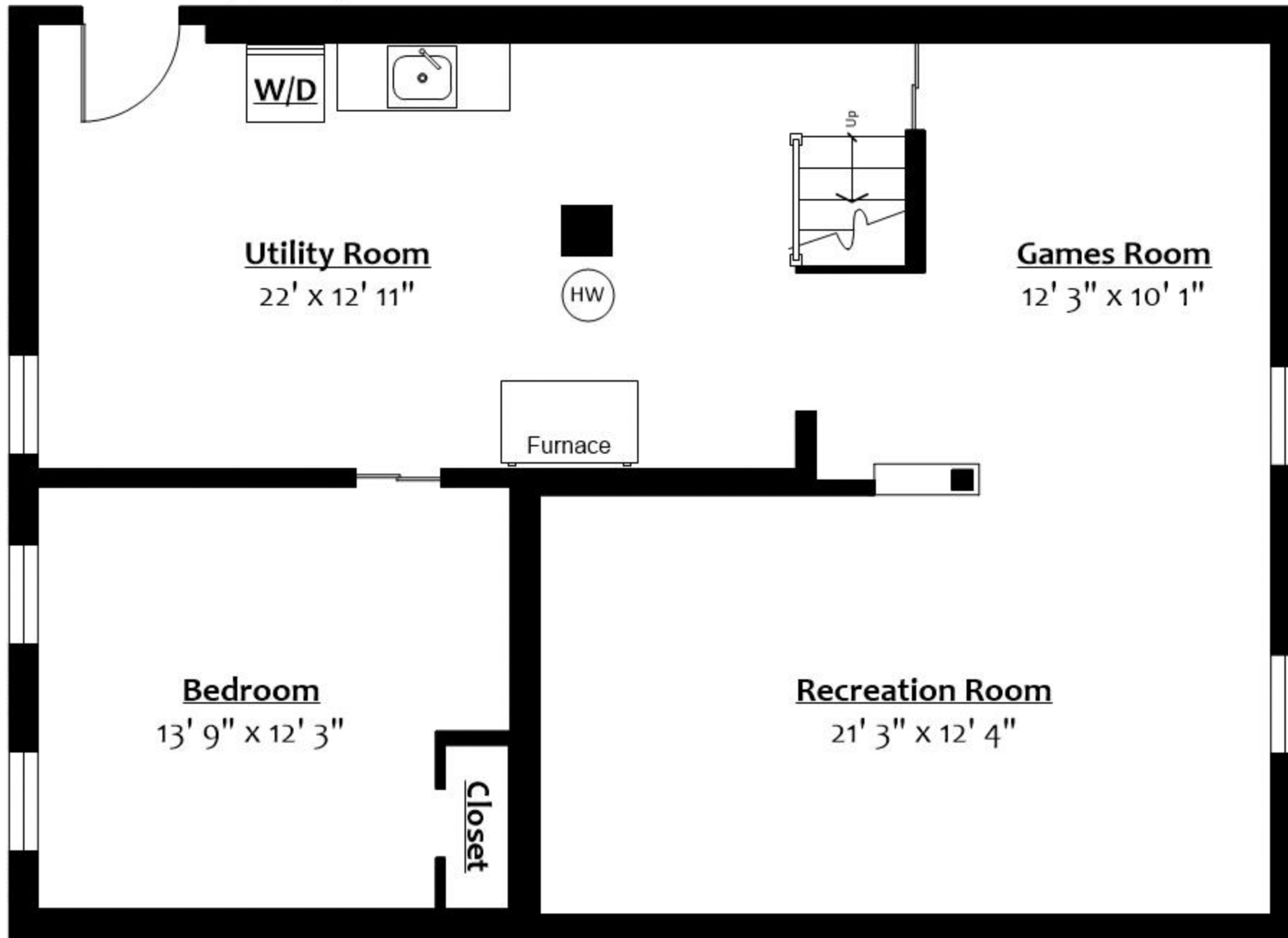
**933 Laurel Street,
 New Westminster, B.C.**

Totals**

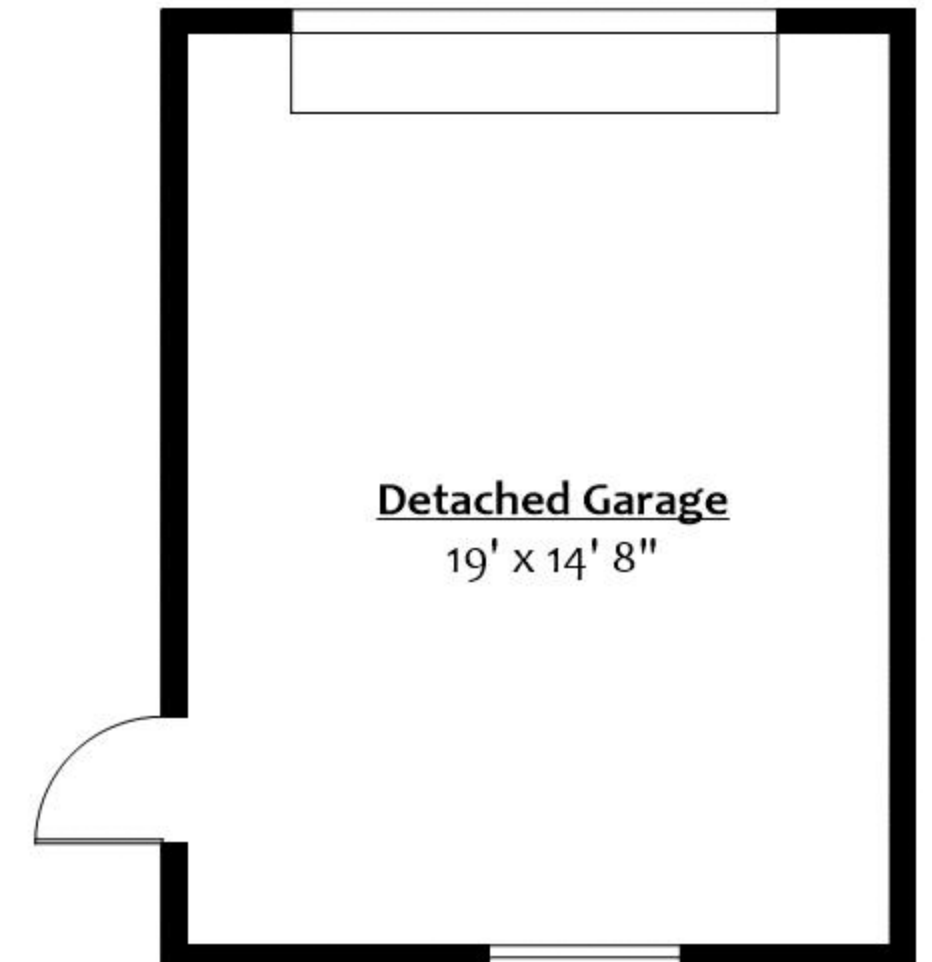
| | |
|---------------|----------------------|
| Main Level: | 1,178 sq. ft. |
| Lower Level: | 1,016 sq. ft. |
| Total: | 2,194 sq. ft. |

| | |
|------------------|--------------------|
| Patio: | 170 sq. ft. |
| Detached Garage: | 314 sq. ft. |
| Total: | 484 sq. ft. |

MAIN LEVEL
 Floor Area: 1,178 Sq. Ft.



LOWER LEVEL
 Floor Area: 1,016 Sq. Ft.



DETACHED GARAGE
 Floor Area: 314 Sq. Ft.